



Chorro Street Offices

San Luis Obispo's historic downtown has established itself as the cultural hub of the Central Coast. This unique project is situated at the center of most walkable parts of the city, within a three block radius of city and county government buildings, the city's finest restaurants, upscale retail, theatres and museums.

1026 Chorro, is a historic building located within the heart of downtown San Luis Obispo. The street level offers retail and restaurants with the second floor offering creative office suites ranging from 700 SF up to 2,600 SF. The suites located on Chorro Street feature 8x8 windows that over look Mission Plaza. The remaining suites all have windows, and skylights, that capture the beauty of the adjacent buildings. All tenants have exclusive use of the sophisticated common conference room that can accommodate up to 12 people.

The interior features original brick walls and wood floors, 11 foot ceilings throughout, mahogany doors and trim, grand stairway, and an intercom access system.

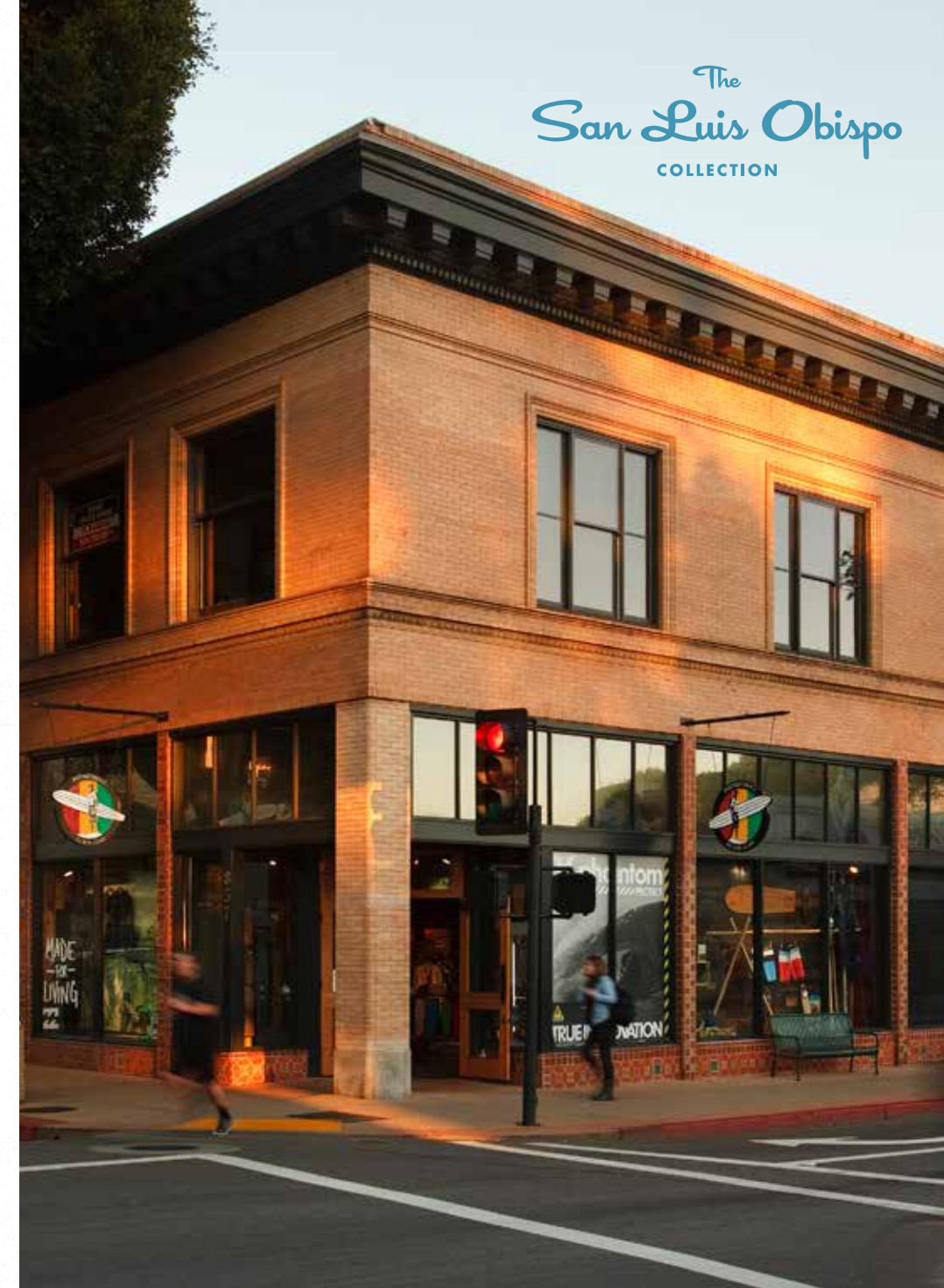
* Fiber optics may be available at a future date.

www.SanLuisObispoCollection.com



FOR LEASING INFORMATION CONTACT:

Preston Thomas, preston@rossetticompany.com, 805.544.3900, #01378821
John Rossetti, john@rossetticompany.com, 805.544.3900, #00524464
Therese Cron, therese@copelandproperties.com, 805.785.0511



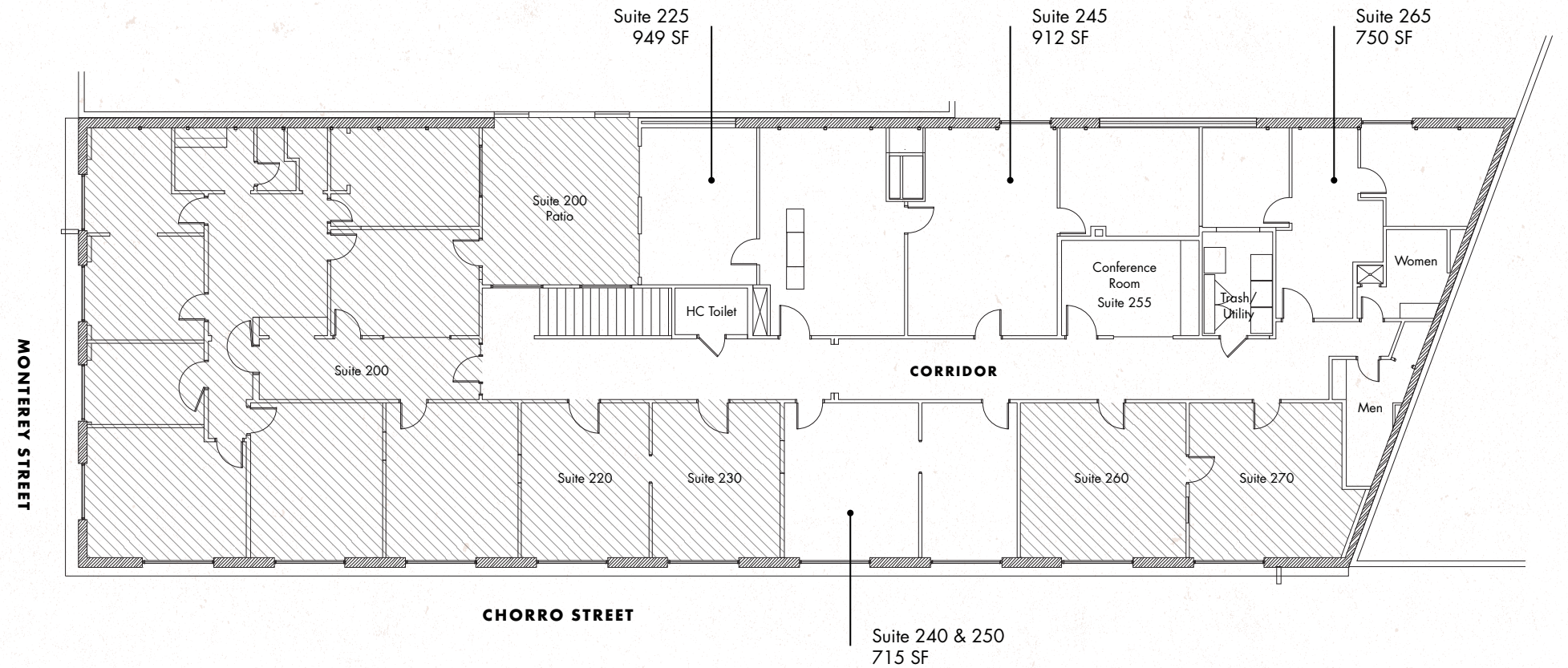
The
San Luis Obispo
COLLECTION

1026 CHORRO STREET OFFICE SUITES



SUITE 240 & 250

1026 CHORRO STREET OFFICE SUITES



SUITE 225

- 949 SF
- Available now
- Terms negotiable
- One enclosed office can be contiguous with Suite 245

SUITE 245

- 912 SF
- Available now
- Terms negotiable
- One enclosed office can be contiguous with Suite 225

SUITE 265

- 750 SF
- Available now
- Terms negotiable
- Two enclosed offices

SUITE 240 & 250

- 715 SF
- Available now
- Terms negotiable
- Double suite featuring Mission Plaza view