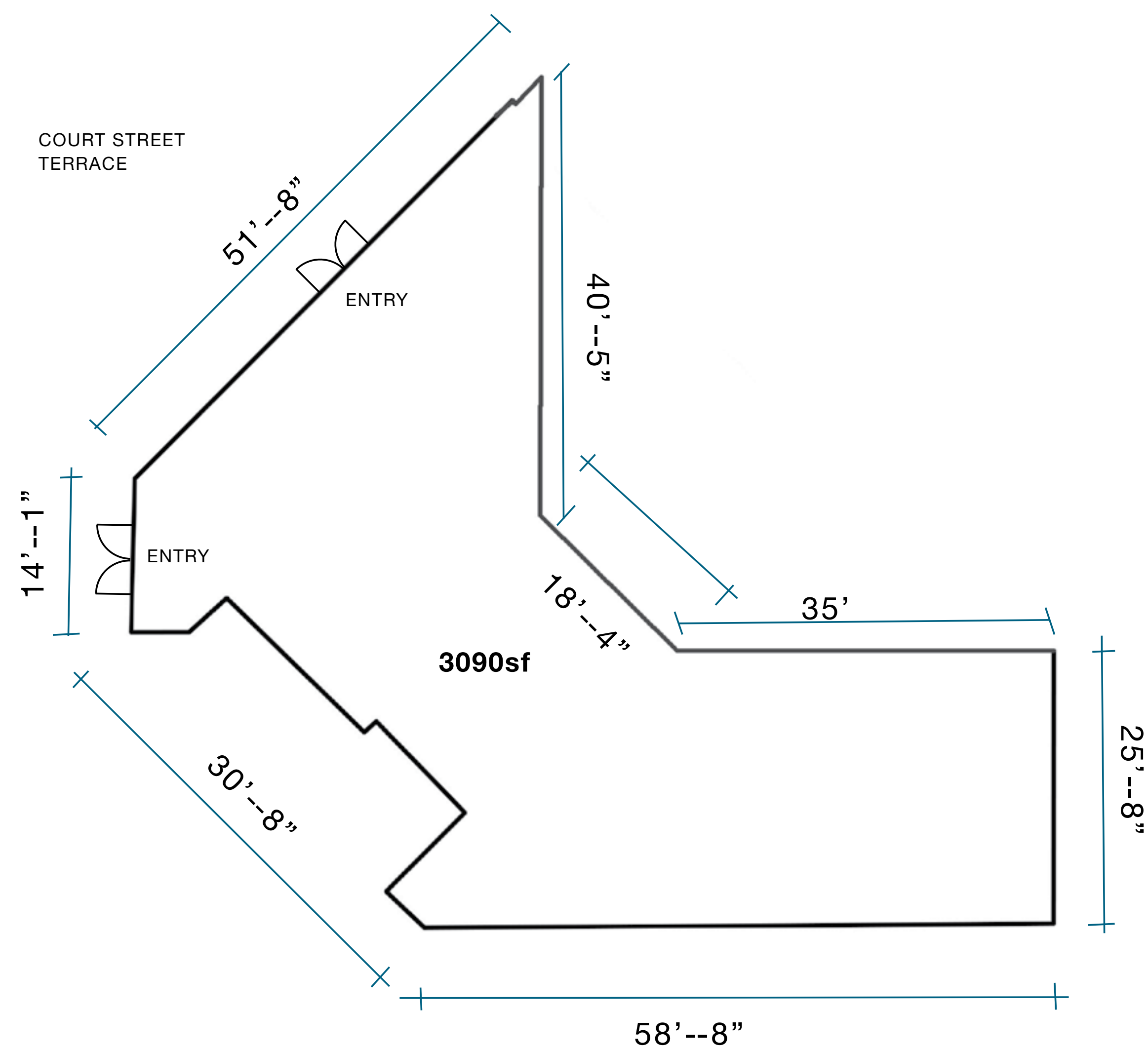


Court Street Suite 206

Available Spring 2020

3090sf in the Heart of Downtown San Luis Obispo

- Situated overlooking San Luis Obispo's busiest retail streets
- Sits on a busy paseo adjacent to Pottery Barn, Sephora, and Lush Cosmetics
- 32 ft of Paseo Frontage, the space shares an attractive Terrace Patio with Sephora.
- Court Street Terrace hosts quarterly site activations for the portfolio



Located on a busy terrace that spans downtown San Luis Obispo's two most important retail streets, and adjacent to the SLO County Courthouse, in the center of the downtown retail, dining and entertainment corridor.



SAN LUIS OBISPO BY THE NUMBERS

- 400,000 trade Area, drive time 25 minutes
- 100,000 daytime population
- 33,000 students, Cal Poly & Cuesta College
- 90 minute average dwell time
- \$90,000 average household Income
- 750,000 annual visitors attend world famous thursday night Farmer's Market
- 3 million people visit Mission San Luis Obispo de Tolosa each year