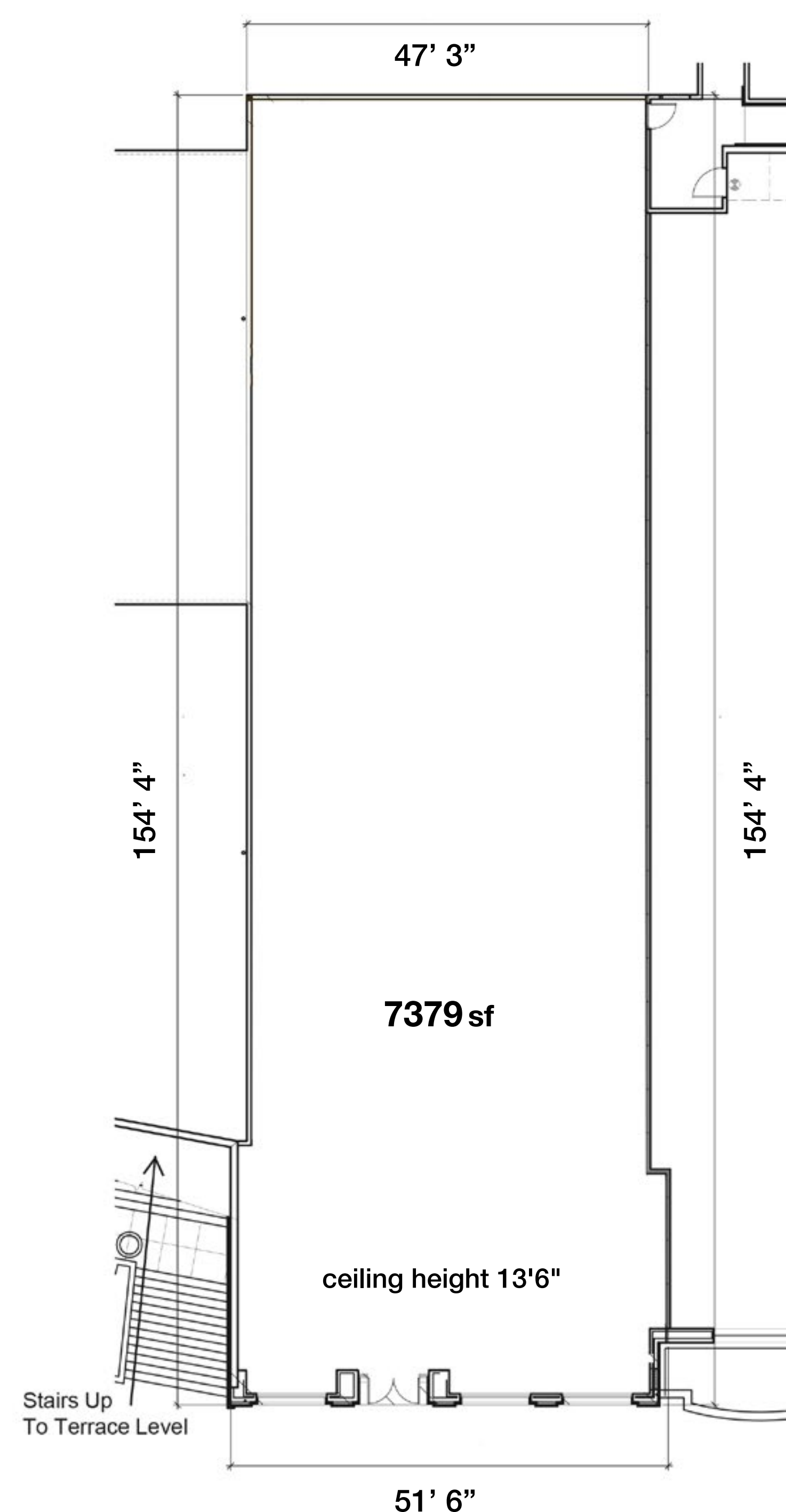


# 980 Higuera Street

Available Now

7379sf in the Heart of Downtown San Luis Obispo



- Situated along San Luis Obispo's most important retail corridor
- Adjacent to Pottery Barn, Sephora, Banana Republic and Lush Cosmetics
- 50+ ft of Street Frontage, adjacent to Court Street Paseo and grand staircase
- Located just steps away from five-star hotels, the city's best restaurants, city and county government, and a host of historical sights, & entertainment venues



980 Higuera Street is located on Downtown SLO's most important retail street, at the gateway to the downtown's bustling retail, dining and entertainment corridor, and adjacent to SLO City and County government campuses.



## SAN LUIS OBISPO BY THE NUMBERS

- 400,000 trade Area, drive time 25 minutes
- 100,000 daytime population
- 33,000 students, Cal Poly & Cuesta College
- 90 minute average dwell time
- \$90,000 average household income
- 750,000 annual visitors attend world famous thursday night Farmer's Market
- 3 million people visit Mission San Luis Obispo de Tolosa each year