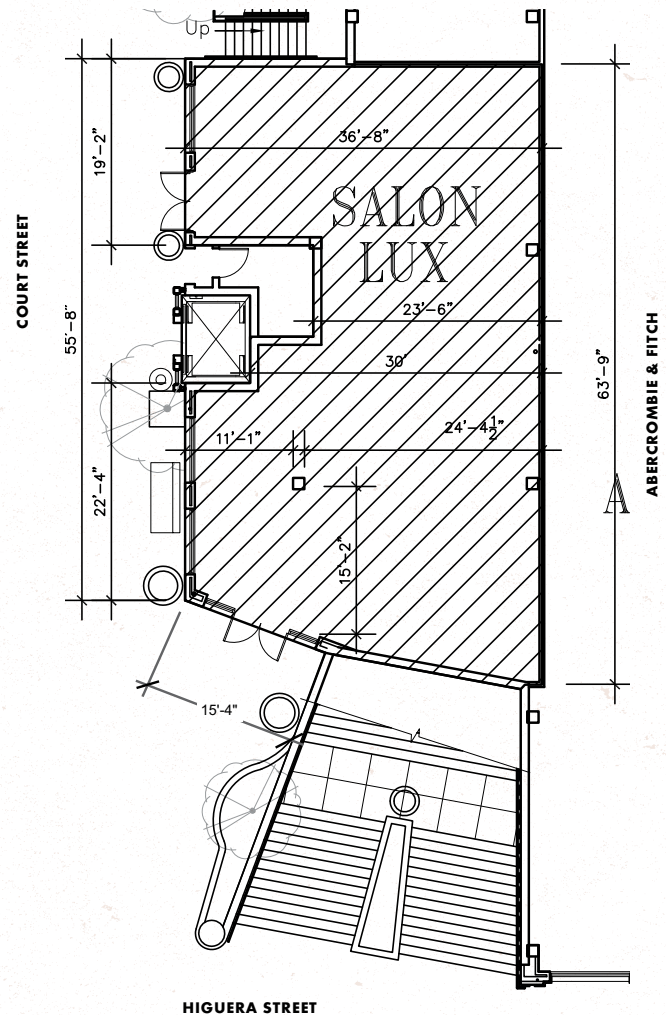




Court Street

1040 Court Street 2000 sf

1040 Court Street, located in the heart of Downtown San Luis Obispo at the Higuera Street grand stairway, on the street level adjacent to Peet's Coffee, Pottery Barn, Sephora, Banana Republic, Abercrombie & Fitch and one block north of The Apple Store. **Available June 2018.**



FOR LEASING INFORMATION CONTACT:

Therese Cron, West Coast JT Realty, Therese.Cron@JamestownLP.com, 805.785.0511

The
San Luis Obispo
COLLECTION

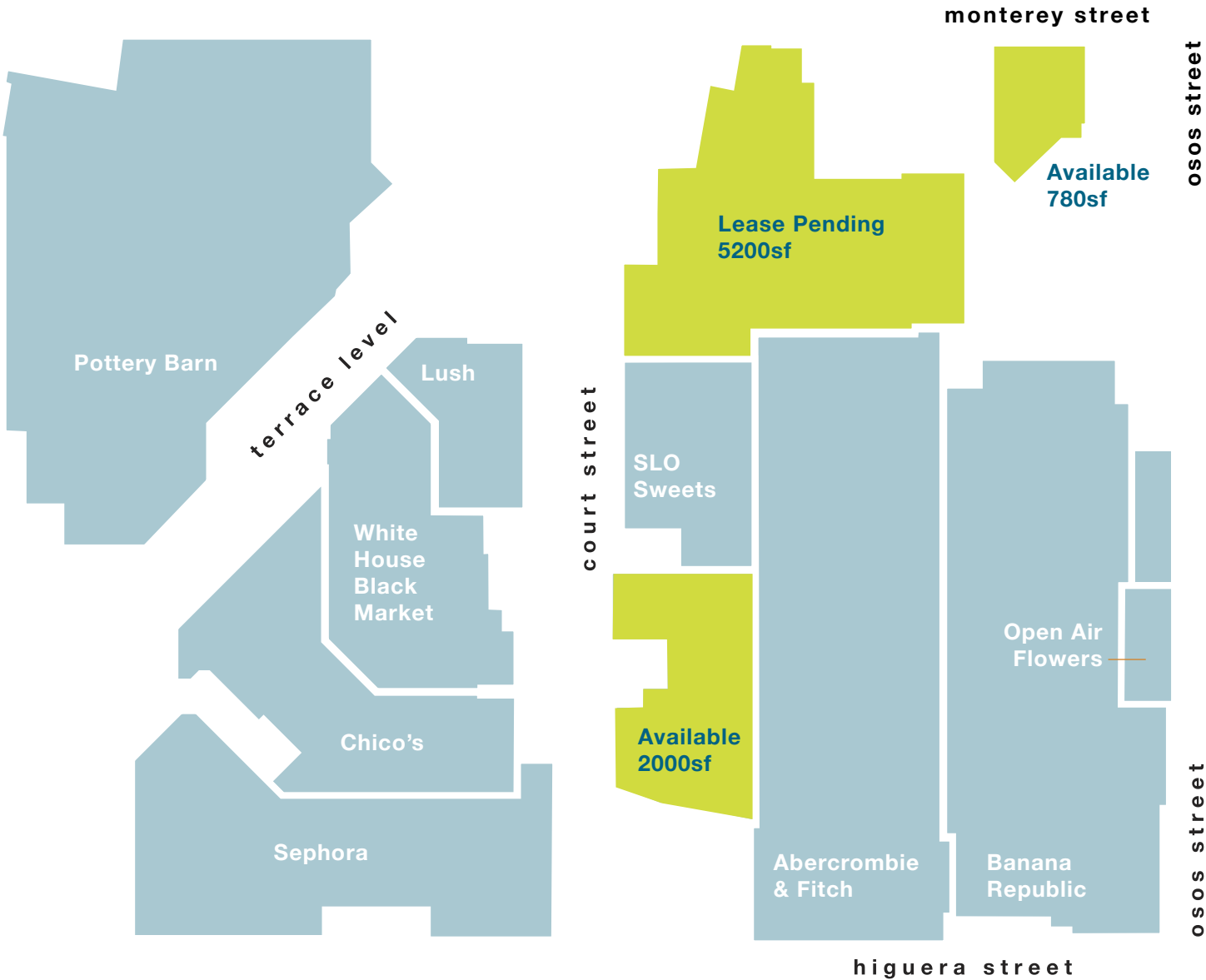


DOWNTOWN
SAN LUIS OBISPO
CORE

Court Street

Tenants

- Abercrombie & Fitch
- Banana Republic
- Chicos
- Lush Cosmetics
- Open Air Flowers
- Pottery Barn
- Sephora
- SLO Sweets
- White House Black Market



Pottery Barn

Lush

White House
Black Market

Chico's

Sephora

SLO
Sweets

Open Air
Flowers

Abercrombie
& Fitch

Banana
Republic

Lease Pending
5200sf

Available
2000sf

Available
780sf

osos street

osos street

higuera street

court street

terrace level